

PART 3RD FLOOR - 18,788 SQ FT OF
FLEXIBLE CAT A+ WORKSPACE

RIVERSCAPE
10 QUEEN
STREET
PLACE

LONDON EC4

THE BUILDING

STUNNING RIVERSIDE OFFICE



PROMINENT RIVERSIDE POSITION, AFFORDING EASY ACCESS TO THE CITY AND SOUTH BANK



ONE OF LONDON'S LARGEST PANORAMIC ROOF TERRACES WITH STUNNING RIVERSIDE VIEWS



01

RIVERSCAPE



02

Riverscape is an exceptional office building perfectly positioned next to Southwark Bridge overlooking the River Thames, with easy access to both the City and Southbank.

Beyond the spacious and contemporary reception, the building currently offers 18,788 sq ft of flexible CAT A+ workspace on the Part 3rd Floor.

The building also features one of London's largest roof terraces, with over 20,000 sq ft of landscaped gardens offering views across the river and London.

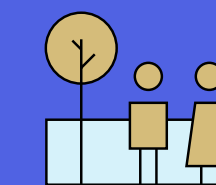
- 01. Reception
- 02. Roof terrace

THE TERRACE

LANDSCAPED GARDENS



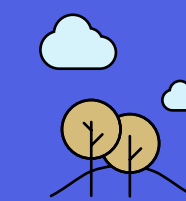
RIVERSCAPE



20,000 SQ FT+ COMMUNAL
ROOF TERRACE



EXCLUSIVE TENANT INDOOR
AND OUTDOOR EVENT SPACE



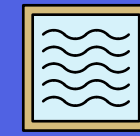
MATURE LANDSCAPING



PANORAMIC VIEWS



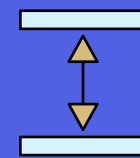
SPECIFICATION



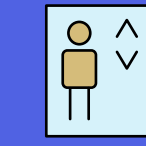
109M
RIVER FRONTAGE



STRIKING DOUBLE
HEIGHT RECEPTION

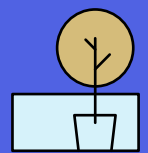


2.7M FLOOR TO
CEILING HEIGHT

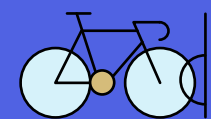


4 × 19 PERSON PASSENGER LIFTS
1 × 1,000 KG GOODS LIFT

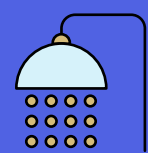
AMENITIES



20,000 SQ FT+ COMMUNAL
ROOF TERRACE



247 BIKE RACKS



190 LOCKERS,
20 SHOWERS



FIVE AT HEART
END OF TRIP FACILITIES



THE SPACE

MAKE IT YOUR OWN

- 01. Workspace
- 02. Kitchen / breakout space
- 03. Meeting rooms



The available CAT A+ office suite offers occupiers the opportunity to create a stunning and flexible workspace with generous meeting rooms, breakout areas, kitchen and reception area.







THE SPACE

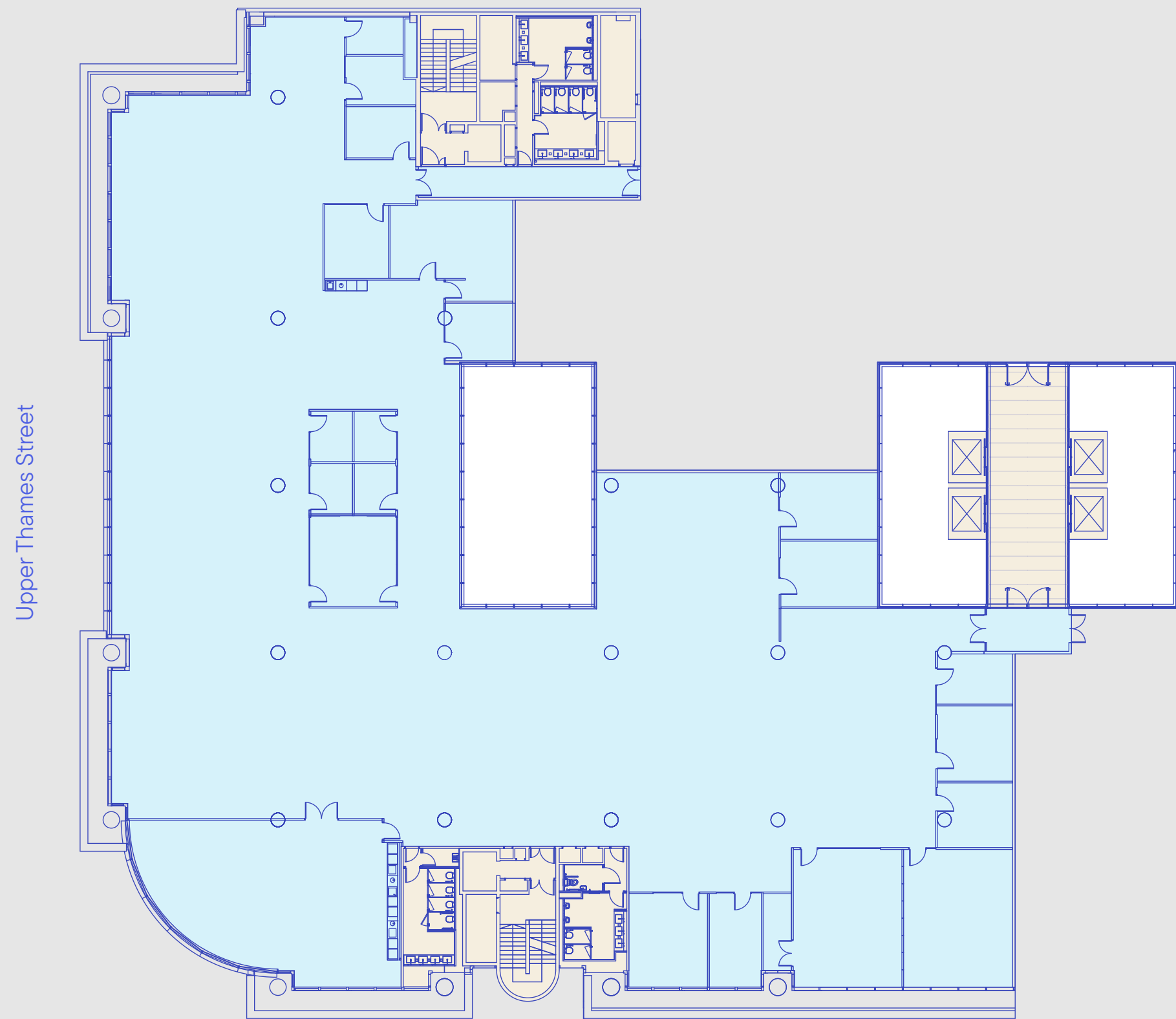
PART 3RD FLOOR

18,788 SQ FT / 1,745 SQ M

- Office
- Core
- Atrium

Floor plan not to scale.
For indicative purposes only.

EXISTING LAYOUT



Queen Street Place

INDICATIVE FIT-OUT



Queen Street Place

Open plan workstations	150	6 person meeting room	05
Agile workstations	24	3 person meeting room	06
18 person meeting room	02	Breakout spaces	03
12 person meeting room	01	Kitchen / teapoints	02
8 person meeting room	02	Welcome area	01
6 person meeting room	05	Occupancy ratio	1:10 sq m

LOCATION

ON YOUR DOORSTEP

The building location provides occupiers with access to the best of the City and South Bank amenity offering.

Transport connections are excellent with Cannon Street just a three-minute walk away, and Bank, St Paul's, Blackfriars and London Bridge as well as high-speed boat services accessible in under 10 minutes.

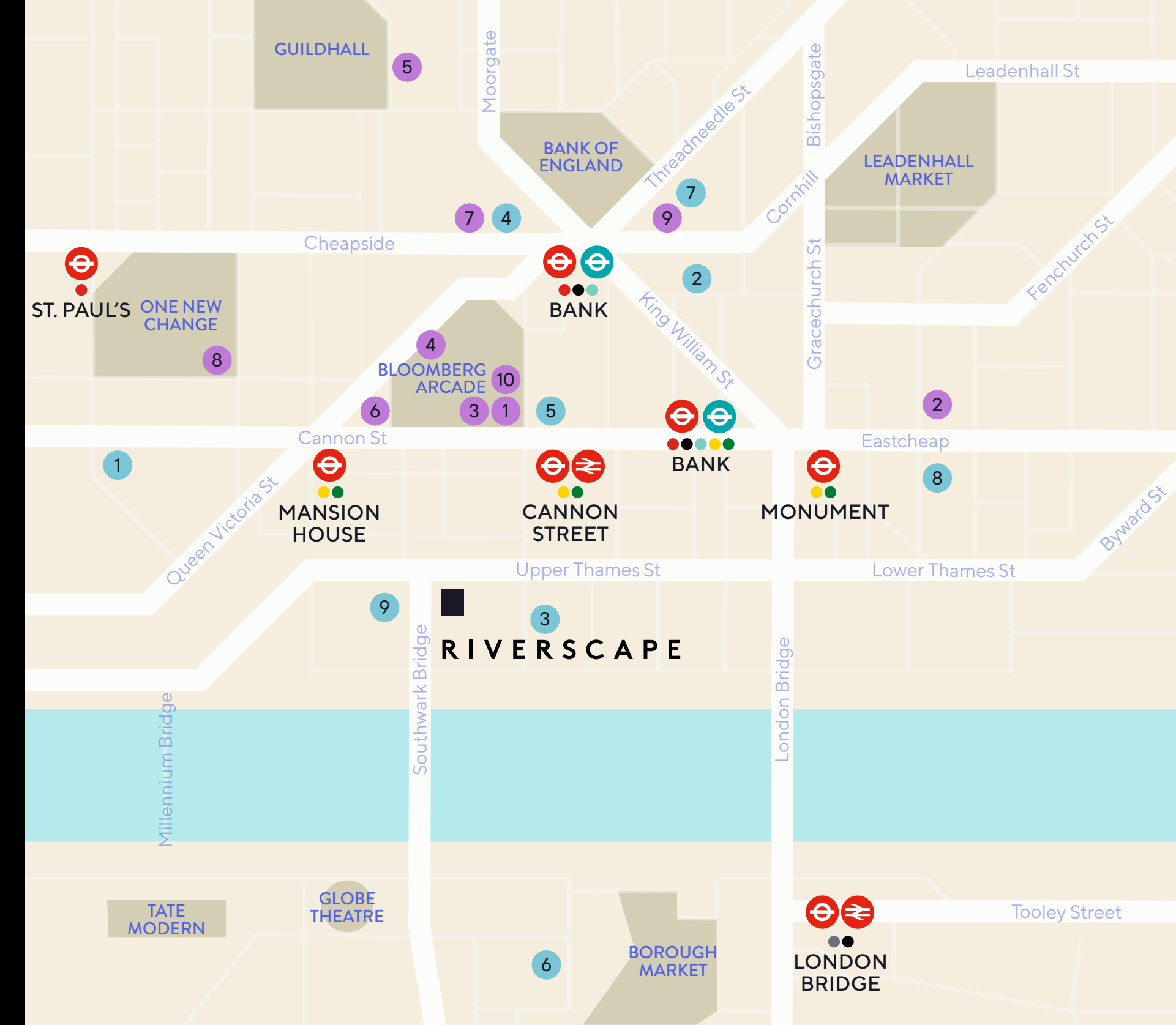


● Bars & restaurants

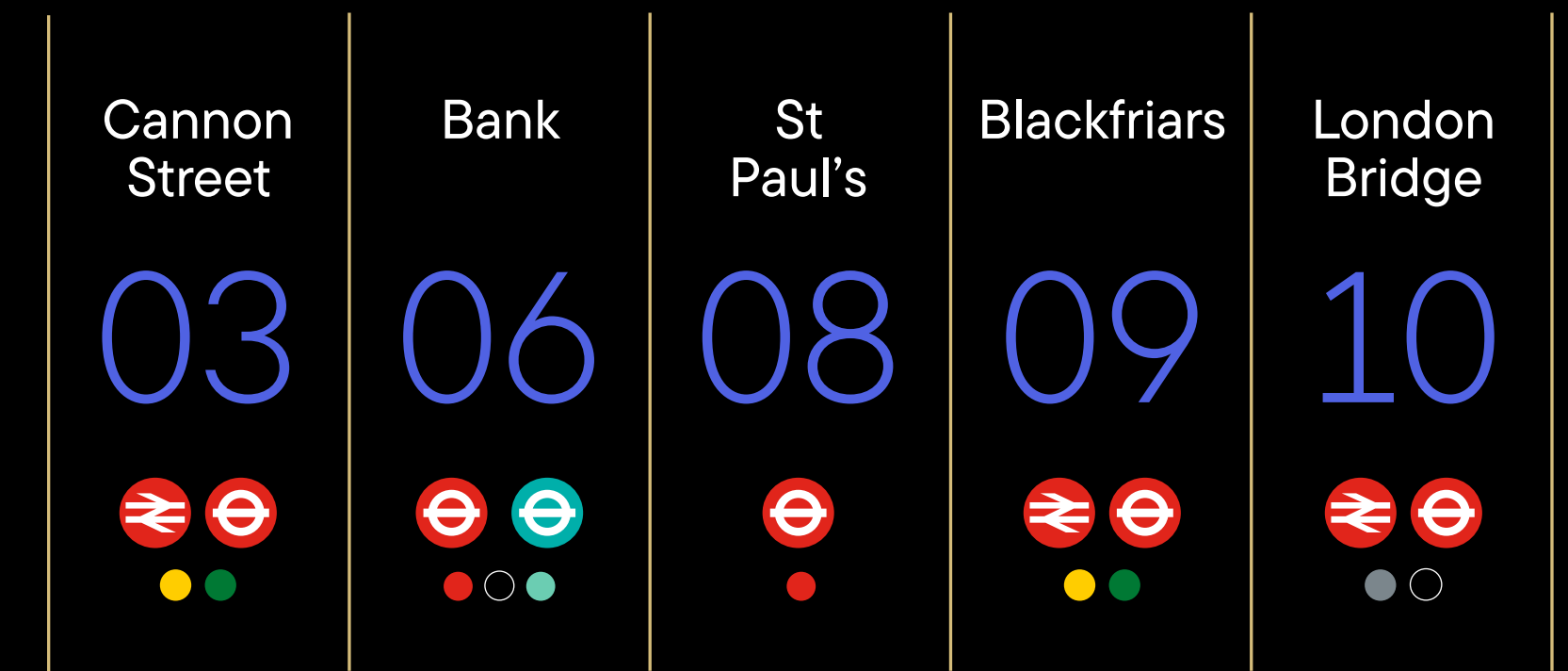
01. Vinoteca
02. Blacklock
03. Caravan
04. Brigadiers
05. Hawksmoor
06. Homeslice
07. The Ned
08. Bread Street Kitchen
09. The Libertine
10. Lina Stores

● Fitness & leisure

01. Fitness First
02. Gymbox
03. Nuffield Health
04. The Ned
05. Virgin Active
06. Borough Yards
07. The Royal Exchange
08. Sky Garden
09. Vintners' Hall



Station walk times (in minutes from the building)



CONTACT

GET IN TOUCH

Terms

Upon application.

Viewings

Strictly through the joint sole letting agents.

Colliers

Tim Williams

07717 576 894

tim.williams@colliers.com

Alex Waters

07936 338 784

alex.waters@colliers.com

Knight Frank

Mike Voller

07739 763 699

mike.voller@knightfrank.com

Marina Campbell

07814 067 404

marina.campbell@knightfrank.com

RIVERSCAPE.LONDON

Colliers International, Knight Frank LLP and their client, give notice that: i) These particulars do not form part of any offer or contract and must not be relied upon as statements or representations of fact. ii) No person in the employment of the agent(s) has any authority to make or give any representations or warranty whatever in relation to this property. iii) Floor areas, measurements or distances given are approximate. Unless otherwise stated, any rents, or outgoings quoted are exclusive of VAT. iv) Any descriptions given of the property cannot be taken to imply, it is in good repair, has all necessary consents, is free of contamination, or that the services and facilities are in working order. Interested parties are advised to carry out their own investigations as required. February 2025.

Designed & produced by Cre8te - 020 3468 5760 - cre8te.london

