

THE SPACE

# PART 3RD FLOOR

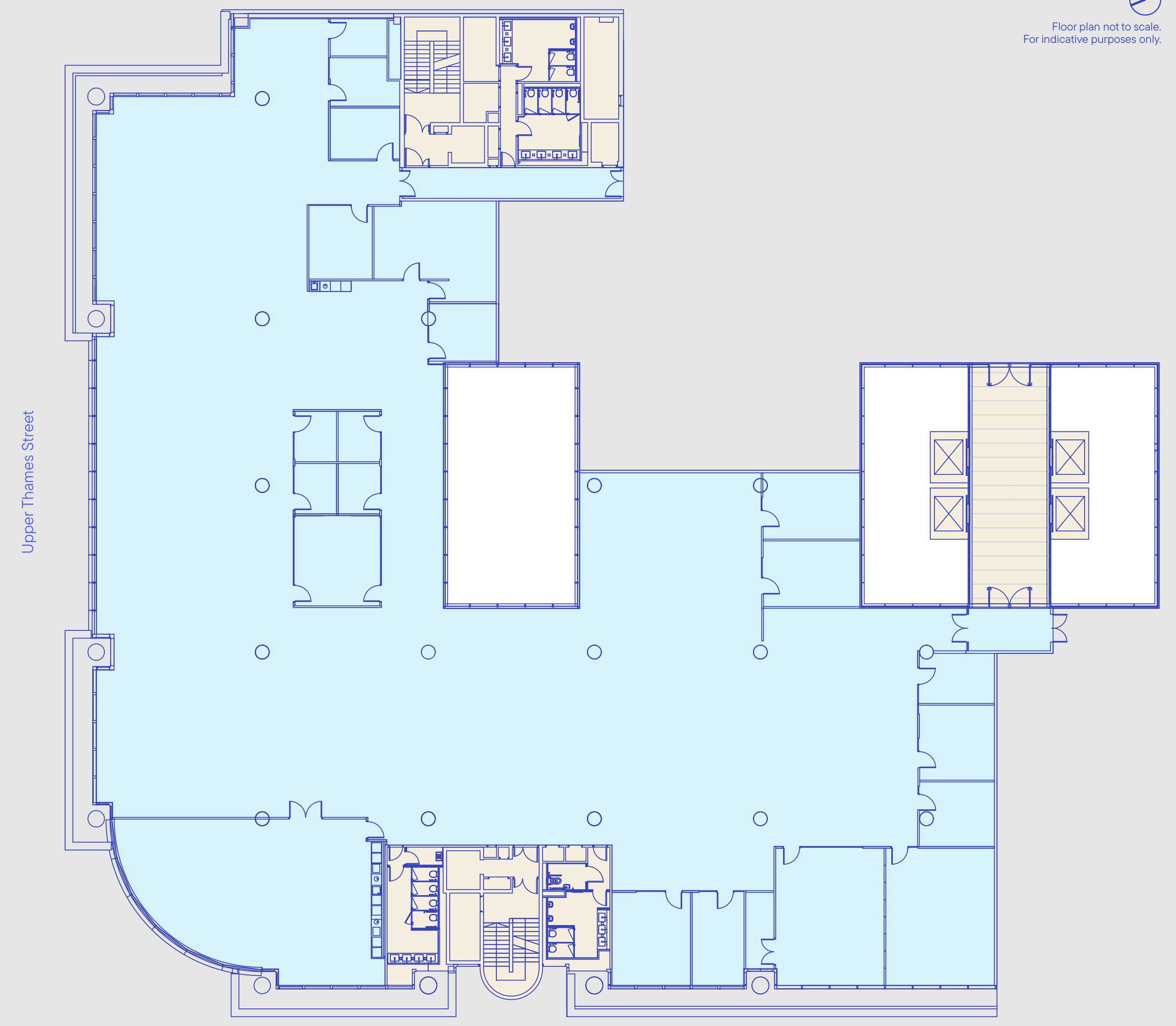
18,788 SQ FT / 1,745 SQ M

EXISTING LAYOUT

- Office
- Core
- Atrium

RIVERSCAPE

Floor plan not to scale.  
For indicative purposes only.



Upper Thames Street

Queen Street Place

THE SPACE

# PART 3RD FLOOR

18,788 SQ FT / 1,745 SQ M

## INDICATIVE FIT-OUT

Open plan workstations	150	6 person meeting room	05
Agile workstations	24	3 person meeting room	06
18 person meeting room	02	Breakout spaces	03
12 person meeting room	01	Kitchen / teapoints	02
8 person meeting room	02	Welcome area	01
6 person meeting room	05	Occupancy ratio	1:10 sq m

- Office
- Core
- Atrium

Floor plan not to scale.  
For indicative purposes only.

